



PCR OFFER:

STICKS



EVERY KISS LIPSTICK

THE FRENCH TOUCH THAT PROTECTS ALL FORMULAS



Full size lipstick & balm offer, customizable, and made in France

- 50/50 round lipstick, with a classic or airtight version
- Ready-to-launch in 100% PP!
- Suited for lipstick and lipbalm formulas, but also concealer, eyeshadow, etc.
- Available with our Maestro mechanism, for a controlled and constant swivel-torque, and pilot with Rouge Green our 100% PP mechanism

*PCR in cap/base/shell to study upon request

MAKE IT YOURS!

Plenty of decoration technologies available
Possibility to modify the top part of the cap with limited CapEx

TECHNICAL INFORMATION

Ref#	Every Kiss
Formula type	Rigid to semi-rigid lip make-up
Pack dimensions	Cap and base: 20.6x74mm; Mechanism: 12.7mm
Pack material	Cap & base PP, Mecha Alu/ABS/POM
MOQ	10ku
Decoration	Hot-stamping, Silkscreen, Varnish, Metallization
Status	Industrial – Plouhinec, France

BLOOM STICK - REMOVABLE

CLASSIC & SIMPLE IS THE FOREVER TREND!



30% r-PET PACK

- For Lipstick/lipbalm formula
- Non-Guided Rtouch mechanism
- Classic and concise round pack design with 50/50 cap/base ratio
- Available with 30% r-PET on pack
- With removable cap, base, and mechanism, consumers take one more step on recycle process



TECHNICAL SPECIFICATIONS

Ref#	AB12358
Pack dimensions	Ø12.7mm
Material	Base & Cap: PET/ABS/PETG Cup: PET Spiral: PS Shell: AL Inner Body: PP
Filling capacity	4ml
Decoration	SS/HS/Spray/VM
MOQ	30Ku
Status	Industrial – Shanghai (China)

CONFIDENTIAL © ALBEA PROPERTY DO NOT DISTRIBUTE

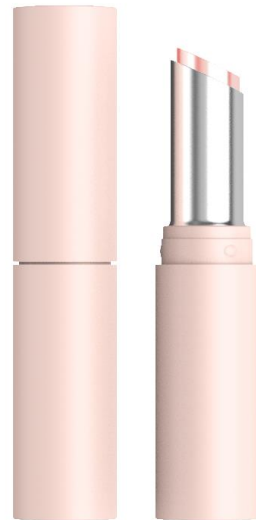
CHEEKY STICK

MAKE THE STICK IN YOUR STYLE!



30% r-PET lipstick pack

- For Lipstick/concealer/highlighter/lipbalm formula
- **Guided** mechanism suits for soft formula
- Classic and concise round pack design with 50/50 cap/base ratio
- Available with **30% r-PET on pack**
- With removable cap, base, and mechanism, consumers take one more step on recycle process



TECHNICAL SPECIFICATIONS

Ref#	AB12357
Pack dimensions	∅11 mm
Material	Base & Cap: PET/ABS/PETG Cup: PBT Driver & Guide: ABS Shell: AL
Filling capacity	4ml
Decoration	SS/HS/Spray/VM
MOQ	30Ku
Status	Industrial – Shanghai (China)

CLEAR TOUCH STICK: LS-092

READY-TO-RECYCLE PET CONCEPTION



100% PET stick from Indonesia

- Sticks are a **trending format**: convenient, they suit the new “Waterless formulas”, trending on all beauty segments as they can last longer without preservatives but also don't need any water in the process of manufacturing
- 100% **PET stick**, available with **50% r-PET** content
- Guided mechanism: work with soft formulas!



TECHNICAL SPECIFICATIONS

Ref#	LS-092
Material	Cover: PET; Guide: PET; Cup: PET; Base: PET Also available with 50% r-PET content: the cover will have some haze, possibility to keep in virgin PET
Formula Type	Soft to Very Soft
Type	Guided
Filling	Top
Dimensions	Mechanism diameter: 15.4mm
Status	Industrial – Semarang (8 cavities) (Indonesia)

SUPERSIZE STICK: PT-093

PERFECT CAMELEON ITEM FOR SKINCARE, MAKEUP & PERSONAL CARE

MONOMATERIAL

PCR

Easy to use, design & ready-to-recycle!

- Sustainable deo Stick in 100% PP, perfectly designed for your products and to be Recyclable-ready in the PP streams
- Comfortable swivel-torque feeling
- Available with 50% r-PP



TECHNICAL SPECIFICATIONS

#REF	PT-093
Pack Size	Ø48 x 102.6 mm
Formula Type	Rigid formula
Material	Bottle Cap Plug: PP Available with 50% r-PP in all components (*non-food grade compliant)
Filling capacity	75ml
MOQ	25ku
Status	Industrial - Semarang (Indonesia)

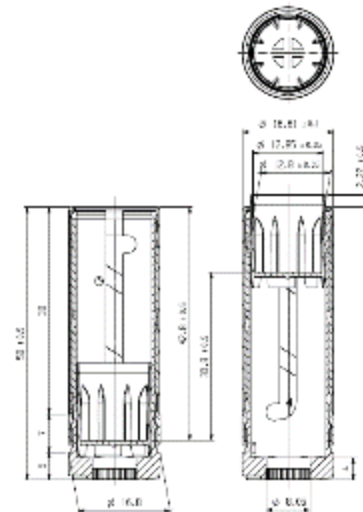
P-SHELL MECHANISM

A SUSTAINABLE ALTERNATIVE, 100% PET



RECYCLABLE-READY

PCR



READY TO RECYCLE!

- A **100% PET mechanism**, to be ready-to-recycle in the PET recycling streams. Currently with three different grades of PET
- Mechanism made in **3 pieces** (TBC. Guide, Shell, Cup)
- Designed with a gentle swivel-torque to keep an elegant gesture
- Refillable by default – depending on the base design
- Soon available with a 100% PET standard pack!

TECHNICAL SPECIFICATIONS

Panwell size	Ø12.7mm
Material	Spiral iPET, Guide PET Claro, cup PET
Status	Pilot ongoing – Shanghai, China

ROUGE GREEN MECHANISM

A SUSTAINABLE ALTERNATIVE, 100% PP AND SOME r-PP PARTS



RECYCLABLE-READY

PCR



READY TO RECYCLE!

- A **100% recyclable mechanism and pack** to be ready-to-recycle in the PP streams
- Available with the shell in r-PP
- Four pieces to ensure optimal functioning and feeling: constant swivel torque; plastic shell available
- Available in all colors to make your mechanism reflect your product image, with a **refillable or non-refillable version**



TECHNICAL SPECIFICATIONS

Ref#	Rouge Green
Formula type	Semi-rigid to rigid
Pack	Endless Kiss PP for refillable system Every Kiss PP if not refillable system
Material	Guide/Spiral/Shell : PP Cup: PET
Decoration	Hot-stamping, SS, Varnish, matt, gloss, flexo
Status	Pilot – Plouhinec – (France)



PCR OFFER:

COMPACTS



PET ONYX L AND TWC

MATERIAL SWITCH: FROM ABS TO PET, FROM VIRGIN TO PCR

MATERIAL SWITCH

PCR



Our best seller round collection made with PCR PET content

- Slim & flat design
- A material switch making them more sustainable than before!
- Opening: elegant rounded tab



TECHNICAL SPECIFICATIONS

Ref#	CM-282 (TWC), CM-256 (L)
Formula type	Pressed and poured
Pack type	One pan
Hinge Type	Pinning
Closing Type	Snapping
Mirror	Available
Transparent cover	Available
Pack size	Ø76mm
Panwell size	Ø59,3mm
Material	Cover: 100% PET or 100% r-PET Base & plate: 70% PET + 30% r-PET
Status	Industrial Q1 2022

BIM FAMILY

MATERIAL SWITCH: FROM ABS TO PET, FROM VIRGIN TO PCR

MATERIAL SWITCH

PCR

PET round collection

- Slim & flat design
- Opening: elegant straight tab

Large
without mirror



Large
with mirror



Medium



Small

TECHNICAL SPECIFICATIONS

Ref#	CM-297 (Large)	CM-298 (Medium)	CM-299 (Small)
Formula type	Pressed and poured		
Pack type	One pan		
Hinge Type	Pinning		
Closing Type	Snapping		
Mirror	Available	Not available	Not available
Transparent cover	Available	Available (window piece)	Available (window piece)
Pack size	Ø74 x 18,2mm	Ø57,2 x 12,7mm	Ø42,4 x 11,95mm
Panwell size	Ø54,2 x 6,25mm	Ø39,2 x 3,7mm	Ø28 x 3,7mm
Material	Cover, base, plate: 30% r-PET + 70% PET		
Status	Industrial		

ROUND MONO COMPACT CM-274

MATERIAL SWITCH: FROM ABS TO PET, FROM VIRGIN TO PCR

MATERIAL SWITCH

PCR



Round mono compact available with PCR PET content

- Classic, simple yet elegant round shape. A material switch making them more sustainable than before!
- Slanted base for a better grip
- Opening: large push button



TECHNICAL SPECIFICATIONS

Ref#	CM-274
Formula type	Pressed and poured
Pack type	One pan
Hinge Type	Pinning
Closing Type	Push button
Mirror	Available
Pack diameter	Ø76,5mm
Pan diameter	Ø59,2mm
Material	100% PET or 100% r-PET Base & cover: 70% PET + 30% r-PET Insert: 70% ABS + 30% r-PET
Status	Industrial with drop test spec 30cm Industrial with usual drop test spec 76cm
Plant	Semarang (Indonesia)

ROUND TWC COMPACT CM-273

MATERIAL SWITCH: FROM ABS TO PET, FROM VIRGIN TO PCR

MATERIAL SWITCH

PCR



Round TWC compact available with PCR PET content

- Classic, simple yet elegant round shape. A material switch making them more sustainable than before!
- Slanted base for a better grip
- Opening: large push button



TECHNICAL SPECIFICATIONS

Ref#	CM-273
Formula type	Pressed and poured
Pack type	Two-way-cake
Hinge Type	Pinning
Closing Type	Push Button
Mirror	Available
Pack diameter	Ø 76.5 mm
Pan diameter	Ø 59.3 mm
Material	Cover: 70% PET + 30% r-PET Base & platform: 70% ABS + 30%r-PET
Transparent cover	Not Available
Status	Industrial with usual drop test spec 76cm
Plant	Semarang (Indonesia)

ROUND TWC COMPACT CM-095

A GREAT BASIC WITH A SUSTAINABLE CONCEPTION

MATERIAL SWITCH

PCR

Round TWC compact available with PCR PET content

- A material switch making them more sustainable than before!
- Very round and soft design
- Opening: large push button



TECHNICAL SPECIFICATIONS

Ref#	CM-095
Formula type	Pressed and poured
Pack type	Two-way-cake
Hinge Type	Pinning
Closing Type	Push Button
Mirror	Available
Pack diameter	Ø 76.4 mm
Pan diameter	Ø 59.2 mm
Material	Base & cover: 70% PET + 30% r-PET Insert: 70% ABS + 30% r-PET
Transparent cover	Not Available
Status	Industrial with usual drop test spec 76cm
Plant	Semarang (Indonesia)

QUARTZ FAMILY

MATERIAL SWITCH: FROM ABS TO PET, FROM VIRGIN TO PCR

MATERIAL SWITCH

PCR

Our best seller square collection made with PCR PET content

- Slim & flat design
- A material switch making them more sustainable than before!
- Opening: elegant rounded tab



TECHNICAL SPECIFICATIONS

Ref#	CM-259 (L), CM-258 (M), CM-257 (S)
Formula type	Pressed and poured
Pack type	One pan
Hinge Type	Pinning
Closing Type	Snapping
Mirror	Available
Transparent cover	Not available
Pack size	70 x 70, 60 x 60, 45 x 45mm
Panwell size	52,61 x 52,62, 47,11 x 47,11, 32,34 x 32,34mm
Material	Base, cover & plate: 70% ABS + 30% r-PET
Status	Industrial with usual drop test 76cm

THE GUARDIAN COMPACT

AIRTIGHT COMPACT MADE IN PET



MATERIAL SWITCH

PCR

A protective compact for sensitive formulas

- Twist gesture: combines the simple and feminine opening gesture of a jar with the convenience of a compact
- For sensitive formulas : airtightness is brought by liner compression while screwing the cover with a multipoint locking system



TECHNICAL DETAILS

- Status: pilot on-going → available pieces Q2 2022
- Material: base & cover: PET ; top cap: cardboard or plastic
 - Plant: Shanghai, China



PCR OFFER:

JARS & BOTTLES



CHEMICAL PCR: DRAMING JARS

CHEMICAL RECYCLED CO-PET

PCR



Tiny jars with chemical recycled copolyester

- Chemical PCR allows great transparency
- Classical on-the-go format
- Matte, glossy or soft touch finish



TECHNICAL SPECIFICATIONS		
Ref#	#2301	#2302
Capacity	3ml	5ml
Pack diameter	Height: 30.6 mm ø23.50 mm	Height: 30.6 mm ø23.50 mm
Material	Cap: ABS or PP, up to 100% r-PP Base: chemical recycled co-PET (30-50%)	
Status	Industrial	
Plant	Matamoros (Mexico) - ISCC	

TWINKLE JARS

MONOMATERIAL AND PCR

RECYCLABLE-READY

PCR



Face cream jars available in full PP

- Round jar
- Ecofriendly: recyclable PP material
- Made in Semarang



PT-085 - 25ml



PT-073 - 12,5ml



PT-095 - 30ml



PT-021 - 15ml

TECHNICAL SPECIFICATIONS

Ref#	PT-085	PT-073	PT-095	PT-021
Pack	Height: 54.7mm	Height: 51.34mm	Height: 43mm	Height: 51.2mm
diameter	Ø 40mm	Ø35.3mm	Ø45mm	Ø33.8mm
Capacity	25 ml	12,5 ml	30 ml	15 ml
Material	Materials: Base & cap: 50% PP + 50% r-PP ; Inner jar and disc: 100%PP			
Status	Industrial			
Plant	Semarang (Indonesia)			

FLIP TOP CAP JAR

A PERSONAL CARE HDPE JAR

PCR

Perfect hair care jar

- EBM HDPE Bottle with a PP flip top cap, available to be reused and recycled
- Both bottle and cap can be available in PE PCR and PP PCR
- For personal care market



TECHNICAL SPECIFICATIONS

Ref#	RX7657
Pack diameter	Height: 84.8mm Ø90mm
Capacity	350 ml
Material	jar HDPE/r-HDPE, cap PP/r-PP
Status	Industrial
Plant	Nanlang (China)

BOTTLE RX-8521

R-PP DROPPER

PCR

A simple, elegant bottle, to match with a cap or dropper

- Squeeze the rubber head to suck the formula into the dropper.
- You can control the amount of formula by yourself according to your needs.
- PET & PP available; **r-PET, r-PP** sustainable
 - A travel-friendly or gift pack size (30mL)
 - Dropper size, perfectly adapted to serums



TECHNICAL SPECIFICATIONS

Name & ref#	RX 8521
Supplier factory	Zhongshan
Drawing ref	RX 8521
Material	Cap: PP Head: Rubber Dropper: Glass
Post-decorations available	SS/HS/VM
MOQ	30 ku
Industrial status	Industrial mold
Samples	RX 8521

CHINA: NEW CAPABILITIES 2021

1 NEW STANDARD ITEMS – MOERAKI TOTTLE 30ml & 50ml

RECYCLABLE-READY

PCR



Activate skincare: the tottle

- Mono/COEX PE available
- **30% PCR PE** sustainable
- New gesture as bottle, ergonomic shape for one hand use
- Elegant image with irregular shape and round shoulder



30 ml



50 ml

TECHINCAL INFO

Capacity	30 ml	50 ml
Materials	Bottle mono/Coex: PE, Plug: PE, Inner and outer cap: PP	
Decorations options	SS, Coating, HS, Labeling	
Status	Industrial – Nanlang (China)	
Moq	30Ku	
Leadtimes	Ex-Works 4 Weeks	

CHIC BOTTLE SERIES

200 ML : PET OR r-PET

RECYCLABLE-READY

PCR



Fishtail dress line shape PET bottle for female market!

- PET bottle matched screw pump, available to be **reused** and **recycled**
- Recyclable without the pump / recyclable bottle
- Available in **r-PET**

TECHINCAL INFO

Capacity	200 ml
Materials	Bottle : PET, r-PET 100% Cap: PP (screw or pump)
Decorations options	SS printing, coating, HS, labeling
Status	Industrial – Nanlang (China)
Moq	30Ku

RX-8604

TRAVELING WITH DREAMS

RECYCLABLE-READY

PCR



PET-PP Bottle

- PET or PP BOTTLE + PP CAP
- **R-PET AVAILABLE**
- For personal care market
- Travel-friendly or gift pack



TECHNICAL SPECIFICATIONS

Material	Bottle PET/PP, cap pp, wiper PE
Capacity	30ml
Bottle neck	18mm
Post-decorations available	Bottle : SS/HS/Lab./Coating Cap : Coating, metalized
MOQ	30K
Industrial status	Industrial mold

VENUS SERIES

DIFFERENT CAPACITY TO MATCH CUSTOMER REQUIREMENT

PCR

Venus 100ml /120ml/150ml PET bottle, round and elegant

- Fine mist for your beauty and wellbeing;
- **R-PET available.**



TECHNICAL SPECIFICATIONS

Material	Bottle PET, Pump collar and actuator PP, cap ABS or AS
Capacity	100ml/120ml/150ml (RX7860/7862/7861)
Bottle neck	24mm
Post-decorations available	Bottle _SS/HS/Lab. /Coating
MOQ	30K
Industrial status	Industrial mold

TOWER BOTTLE

A PERSONAL CARE HDPE BOTTLE

RECYCLABLE-READY

PCR



RX 7818 – HDPE/PP BOTTLE

- EBM HDPE Bottle with a PP flip top cap, available to be **reused and recycled**;
- Both bottle and cap can be available in **PE PCR and PP PCR**;
- For personal care market.

TECHINCAL INFO

Capacity	250ml
Materials	Bottle HDPE/rPE,cap PP/rPP
Decorations options	Silkscreen Printing, Coating, Hot Stamping, Labeling
Status	Industrial
Moq	30Ku
Leadtimes	Ex-Works 4 Weeks



PCR OFFER:

DIP-INS



RECYCLED & SUSTAINABLE PACKS

PCR LIPGLOSS & MASCARA OFFER FROM BOTTANUCO



Enter the circular economy of plastics with Albéa!

- Bottanuco produces mascara and lipgloss packs made of PCR: 75% of the pack is in PCR and complies with the ALBEA safety rules
- Now available on our best sellers: MEMOIRE FP079 , LUMIERE FP099, SUNSET FP250 AND EQUILIBRE FP017
- All bottles in PET are eligible to switch to PCR PET (with limits in the color range according to the row material)



TECHNICAL SPECIFICATIONS

Bottle	100%* PET PCR
Cap	100%* PP PCR
Stem	PBT
Wiper	PE
Brush	Fiber/Plastic

*Masterbatch % excluded

THE PERFECT MIX COLLECTION

THE BEST FILAMENTS BLENDED TO OVERSTEP THE PERFORMANCE LIMIT

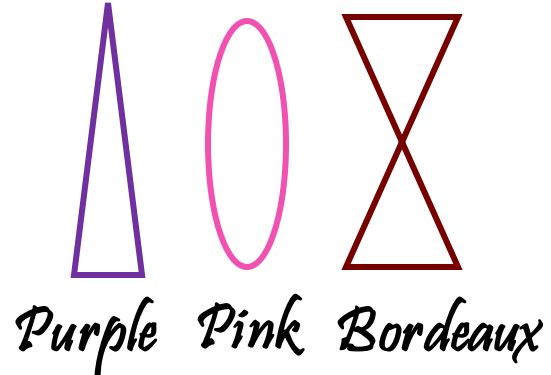


From the summit the landscape is awesome/breathless..

- We have studied all the existing filament and we have played with them to reach the best blended fibers
- The characteristic of those fiber allow to reach unknown performance
 1. Purple: Volume & Length (929)
 2. Pink : Extra Volume (930)
 3. Bordeaux: volume & Curl (928)



Easy & classical shape to valorize the effect and the **fibers performance;**
adaptable to different texture



TECHNICAL SPECIFICATIONS	
	MEMOIRE
Bottle	r-PET (Varnished+ SS)
Cap	r-PP (Varnished)
Stem	PBT
Wiper	PE
Brush	SPECIAL MIXED FILAMENTS



RECYCLED & SUSTAINABLE PACKS

PCR LIPGLOSS & MASCARA OFFER FROM MATAMOROS



Enter the circular economy of plastics with Albéa!

- Matamoros produces mascara and lipgloss packs made of PCR: 60% of the total weight of the pack is in PCR and complies with the ALBEA safety rules
- All bottles in PET are eligible to switch to PCR PET (with limits in the color range according to the row material)
- Now available on our best sellers:



TECHNICAL SPECIFICATIONS	
BOTTLE	100% PET PCR
CAP	68% PCR Aluminium
STEM	PP / PBT
WIPER	LDPE

*Masterbatch % excluded

100% HDPE PCR BRUSHES OFFER

FROM BOTTANUCO

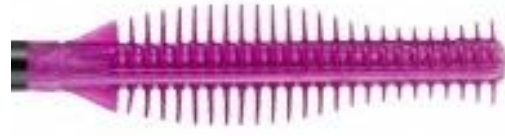
PCR



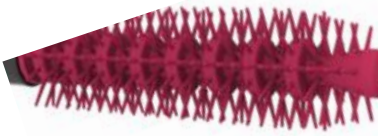
Nano Hollow
Extra volume



Super Brush
Extra volume



Scale
Volume & Definiton



Enter the circular economy of plastics with Albéa!

- The **HDPE used is FDA and 100% PCR**
- We offer 3 different brushes PCR with 3 completely different make up effect
- The r-PE material is harder than the common plastic used for brush and this open to new performances, **ideal with high viscous and volumizing formula**

Name	Ref	Material	MOQ
Nano Hollow	AP655	HDPE PCR	10Ku
Super Brush	AP312	HDPE PCR	10Ku
Scale	AP437	HDPE PCR	10Ku



Bottle FP079X: 100%r PET
Cap CP097F: 100%r PP



MONOMATERIAL MASCARA: 100% PP

OUR BEST SELLERS IN 100% PP

RECYCLABLE-READY

PCR



SAVE THE PLANET[®]



Nano hollow



Roots



Bottanuco
MémOIRE
FP079
CAPA: 8.3 ml
MAT. B: PP+HDPE/
HDPE/
PP / PET/PA / PETG /
PCTA
MAT. C: ABS / PP / AL
INS. NECK ø: 9.4
BRUSH: Plastic / Fiber
IBM



Bottanuco
SUNSET
FP250
CAPA: 15 ml
MAT. B: PP / HDPE/
PP + HDPE
MAT. C: PP
INS. NECK ø: 11.6
BRUSH: Plastic / Fiber
IBM



Bottanuco
EQUILIBRE
FP017
CAPA: 5.1 ml
MAT. B: PP / HDPE/
PP+HDPE / PET / PA/
PETG / PCTA
MAT. C: ABS / AL
INS. NECK ø: 9.4
BRUSH: Plastic / Fiber
IBM



Bottanuco
MémOIRE
FP079
CAPA: 8.3 ml
MAT. B: PP+HDPE/
HDPE /
PP / PET/PA / PETG /
PCTA
MAT. C: ABS / PP / AL
INS. NECK ø: 9.4
BRUSH: Plastic / Fiber
IBM

TECHNICAL SPECIFICATIONS

	MEMOIRE	SUNSET	EQUILIBRE
Bottle	PP	PP	PP
Cap	PP or PP PCR	PP or PP PCR	PP or PP PCR
Stem	PP	PP tbc	PP
Wiper	PP	PP	PP
Brush	NANO HOLLOW - ROOTS	NANO HOLLOW	NANO HOLLOW

The tube format for dip-in applications allow to consume more bulk

- **30% weight reduction** compared to a traditional mascara
- Squeezable tube : **+30% restitution rate** compared to a traditional mascara*
- Designed for mascara, lipgloss, and concealer make-up
- A complete large range of ready-to-go applicators, in fiber or in plastic, for mascara, concealer, lipgloss, and specific applicators on request
- PCR AVAIIABLE (bottle HDPE/LDPE ; cap PP)



TECHNICAL SPECIFICATIONS	
Name & ref#	Glam'Tube K-289I
Formula type	Mascara, Lipgloss, Concealer
Dimensions	Ø19mm
Filling capacity	8 /10/13mL
Material	Tube sleeve: standard (coex/mono) Tube head (T15): HDPE Wiper: LDPE Stem: POM, POM LOV, PBT CAP: ABS or PP /PP PCR , Alu Cap 80% PCR Tube 36% PCR
Decoration	Tube: HS, offset, silkscreen; HS, SS, metallisation
MOQ	30K
Status	Industrial – Nanlang & Shenwan, Zhongshan (China)

GLAM' TUBE

THE ON-THE-GO TUBE FOR MAKEUP

REDUCE

PCR

A fancy way to reduce the plastic by improving the restitution

- **On-the-go, trendy, fun & lighter design, squeezable tube** for a higher **restitution** rate
- Complete **large range of applicators**, to target every needs
- **PCR available** for the cap and the tube
- Glam'tube weight **reduction** compared to a classic bottle: **more than 50%** (13 ml)

Flocked applicators



TECHNICAL SPECIFICATIONS

Name & ref#	Glam'tube K-2891
Formula type	Mascara, Lipgloss, Concealer
Turnkey offer	Yes
Dimensions	Ø19mm
Filling capacity	8 /10/ 13ml
Material	Tube sleeve: standard (coex/mono) Tube head (T15): HDPE / PCR Wiper: LDPE Stem: POM, POM LOV, PBT CAP: ABS, or Alu or PP Cap: 80% r-PP Tube: 36% r-PE
Decoration	SS, HS
Status	Industrial, Nanlang & Shenwan, Zhongshan (China)

GLAM' TUBE

THE ON-THE-GO TUBE FOR MAKEUP

REDUCE

PCR

A fancy way to reduce the plastic by improving the restitution

- **Squeezable tube** for a **higher restitution rate**
- With a complete **large range of applicators, in fiber or in plastic**, to target every makeup effect requested
- **PCR available** for the cap and the tube
- Glam'tube weight **reduction** compared to a classic bottle: **more than 50%** (13ml)



Mascara brushes



TECHNICAL SPECIFICATIONS

Name & ref#	Glam'Tube K 2891
Formula type	Mascara, Lipgloss, Concealer
Turnkey offer	Yes
Dimensions	Ø19mm
Filling capacity	8 /10/ 13mL
Material	Tube sleeve: standard (coex/mono) Tube head (T15): HDPE/ PCR Wiper: LDPE Stem: POM, POM LOV, PBT CAP: ABS, or Alu or PP Cap: 80% r-PP Tube: 36% r-PE
Decoration	Silkscreen, Hot Stamping



THANK YOU!



FOLLOW US
www.albea-group.com

