

CN6002 9P

1	18V/24V
2	18V/24V
3	18V/24V
4	18V/24V
5	18V/24V
6	GND
7	GND
8	GND
9	GND

CN6003 13P

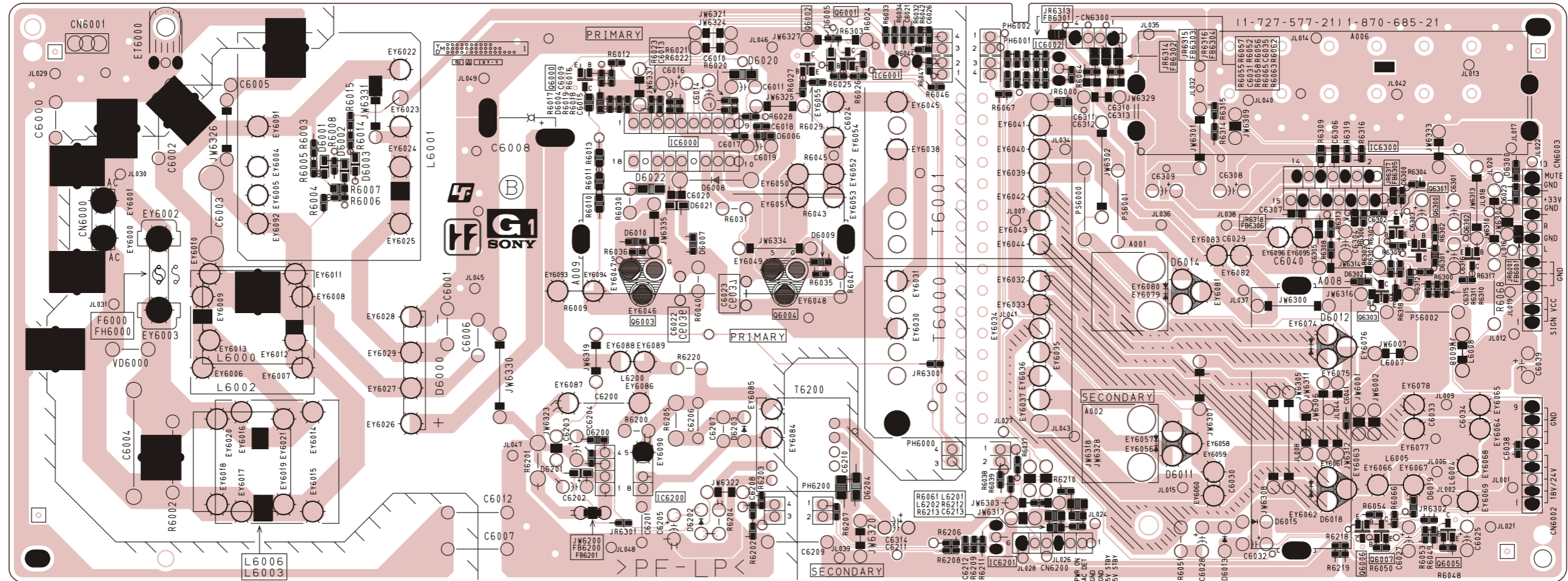
1	SIGNAL_VCC
2	SIGNAL_VCC
3	SIGNAL_VCC
4	GND
5	GND
6	GND
7	L_IN
8	GND
9	R_IN
10	GND
11	+3V
12	GND
13	GND

CN6200 6P

1	STBY+5V
2	STBY+5V
3	GND
4	GND
5	AC_OFF_DET
6	POWER_ON

CN6501

~ G1 Printed Wiring Board Conductor Side B ~



~ G1 Board Semiconductor Location Table Side B ~

DIODE	D6007	G - 4	D6012	L - 5	D6018	M - 7	D6203	H - 6	IC6001	I - 3	TRANSISTOR	Q6005	N - 7		
D6000	E - 6	D6008	G - 4	D6013	L - 7	D6019	M - 6	D6300	N - 4	IC6002	J - 3	Q6006	M - 7		
D6004	F - 3	D6009	H - 5	D6014	K - 5	D6200	F - 6	D6302	M - 5	IC6200	G - 7	Q6007	M - 7		
D6005	H - 3	D6010	G - 4	D6015	L - 7	D6201	F - 6	IC	IC6201	J - 7	Q6002	H - 3	Q6302	N - 4	
D6006	H - 4	D6011	K - 6	D6016	L - 4	D6202	G - 7		IC6000	G - 4	IC6300	M - 4	Q6004	H - 5	Q6303